

# AccuPoint<sup>®</sup> Advanced

Advanced ATP Hygiene  
Monitoring System



## A New Generation in Hygiene Monitoring

Robust and lightweight handheld unit

Unique, innovative samplers

Intuitive Data Manager Software



# HYGIENE-MONITORING

Hygiene monitoring is at the core of every food safety programme. With a growing global population that consistently demands more, higher quality food, the importance of hygiene monitoring will only increase. A good hygiene monitoring programme can highlight problems before products are manufactured. Stopping these issues early not only protects public health, but it also protects brand integrity.

The AccuPoint® Advanced ATP Monitoring System validates the effectiveness of your hygiene programme by detecting food residues and microorganisms present on surfaces and in liquids by measuring the amount of adenosine triphosphate (ATP) present. AccuPoint Advanced is the first and only hygiene monitoring system that has been rigorously tested and validated by AOAC as an AOAC Performance™ Tested Method. This certification follows a successful comparison study conducted by NSF International.

## Step 1 - State of the Art Samplers

Our three colour-coded samplers with liquid-stable chemistry are unrivalled in their accurate recovery of ATP from surfaces and rinse waters. Unlike traditional swabs utilised by other manufacturers, our samplers cover a larger surface area to extract ATP more consistently.

- Samplers with liquid-stable chemistry
- Consistent reactions for improved reproducible results
- Stable at room temperature for up to two weeks
- Patented flat-head design breaks through biofilm and increases surface contact
- Colour-coded for easy identification of surface, water and access samplers
- One-handed, single-step activation for all sampler types



### AccuPoint Access Sampler

For testing tight and hard-to-reach spaces. Features a rigid flocked polymer sample tip for optimal recovery & release of ATP.



### AccuPoint Surface Sampler

Patented flat-head design for consistent sampling and improved recovery of ATP on surfaces.

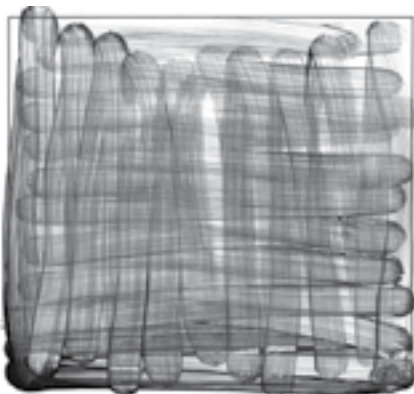


### AccuPoint Liquid Sampler

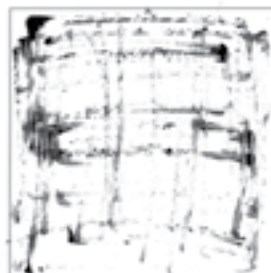
Sampler of choice for accurately testing clean-in-place rinses and liquids for the presence of ATP.

## Sampler Precision

The unique design of the AccuPoint Advanced sampler allows greater sample accuracy and consistency. You can clearly see the difference in coverage when you look at the sample pattern from AccuPoint Advanced compared to that from a traditional ATP surface swab.



AccuPoint Advanced ATP Surface sampler pattern



Traditional ATP Surface swab pattern



